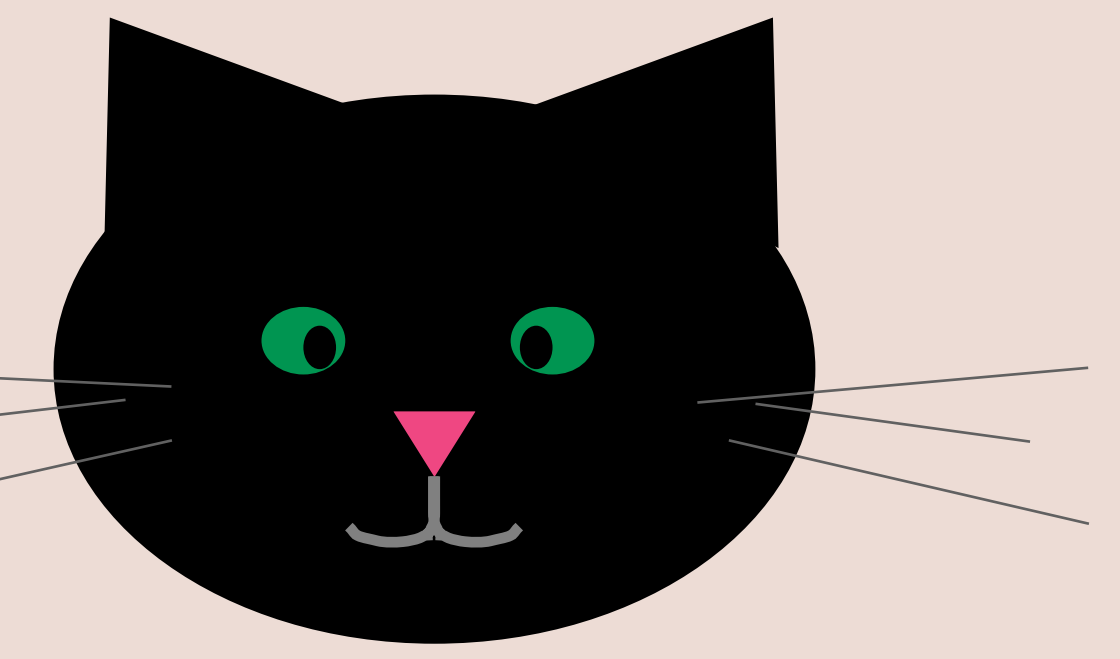
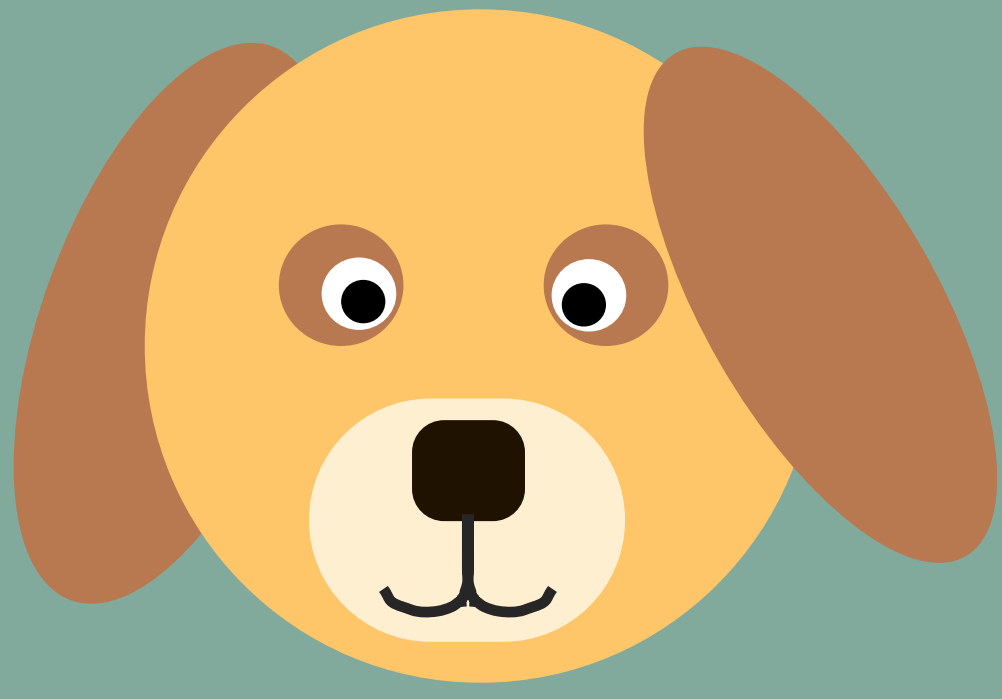


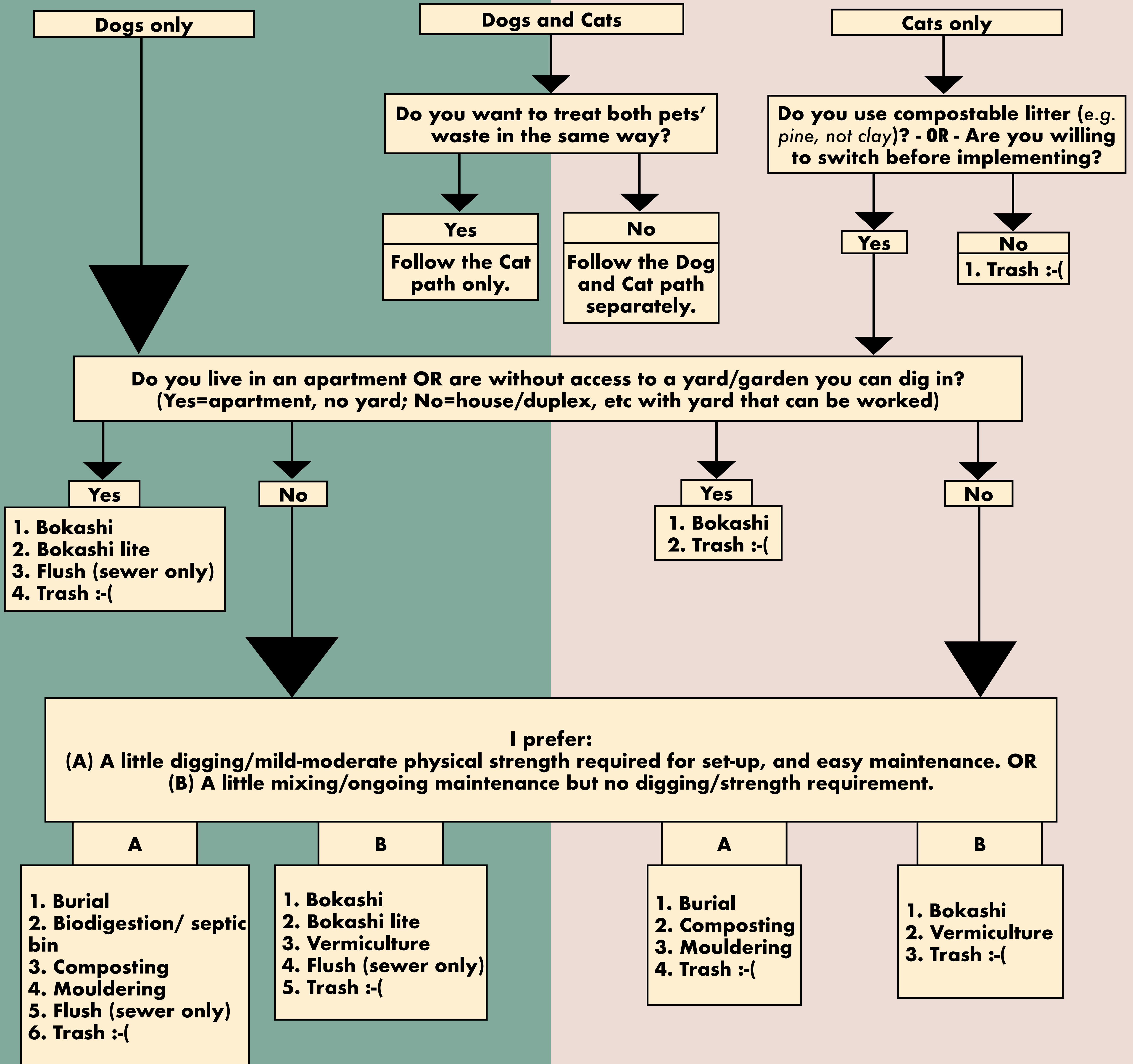
Cat n' Dog Poo Can Be Green Too!

An Infographic based on Rose Seemann's [book](#):
The Pet Poo Pocket Guide: How to Safely Compost and Recycle Pet Waste

How Much poo do our dog and cats produce? [Lots!](#)
 Take your pet as close to zero waste as possible. **Don't trash poo!** Turn it into fertilizer for plants.
 It's easy and not smelly if you do it right.



You can **recycle pet waste** using any of the processes below.
 Use finished material to enrich soil for house plants or flowers, trees and other landscaping - *not edible crops.*



The Pet Poo author chose videos based on value and clarity of content.

- Bokashi:** [What is it?](#) - [Making Bokashi Mix](#) - [Drying Bokashi after making bokashi mix](#)
- Bokashi Lite:** Bokashi Cycle offers a simple commercial system. [Pet Waste Disposal Video](#) - [How to bury the fermented pet waste](#)
- Flush:** (Sewer connection only, no septic tank.) Flushing dog poop down the toilet - without a bag, only the waste - is a valid disposal method, [says the U.S. Environmental Protection Agency](#). Don't want to use your bathroom toilet? Search online for flushing or power flush options for dog waste or check out [this simple solution to creating a doggy doo drain](#).
- Trash:-** : Moves directly to the [local landfill](#).
- Burial:** This can be a simple hole or a nicely finished one [like this](#).
- Composting:** [Using a compost bin on the ground](#) or [using an enclosed container](#).
- Vermiculture:** Worm Farm! Don't feed the worms poo if your pet is taking de-wormers! Only input pet poo without other food items. Check out [this video](#) for more information.
- Mouldering:** Cold or slow composting (rotting). Can be done in ventilated closed containers using sawdust, on the ground in an enclosed mouldering cove or [digging a spot in the yard for it](#).
- Biodigestion/septic bin:** Do not throw in bags! You can use dry bokashi mix to help speed things up. [Video 1](#) - [Video 2](#)